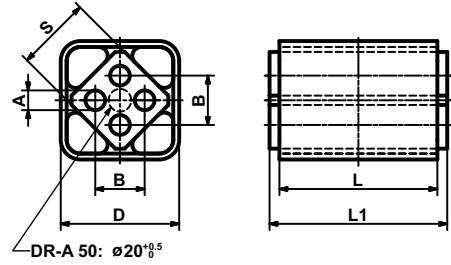


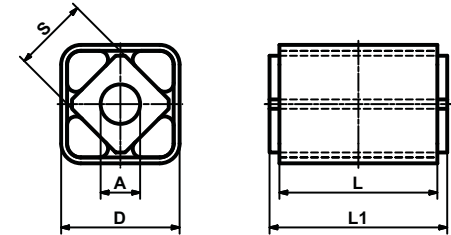


Rubber Suspension Units

Type DR-A



Type DR-C



DR-A				DR-C			□D	□S	L	L1 ±0.2	Weight [kg]
Art. No.	Type	øA ^{+0.5} ₀	B	Art. No.	Type	øA					
01 011 001	DR-A 15x 25	5	10 ±0.2	01 031 010	DR-C 15x 25	10 ^{+0.4} _{+0.2}	27 ^{+0.4} ₀	15	25	30	0.06
01 011 002	DR-A 15x 40			01 031 011	DR-C 15x 40				40	45	0.10
01 011 003	DR-A 15x 60			01 031 012	DR-C 15x 60				60	65	0.15
01 011 004	DR-A 18x 30	6	12 ±0.3	01 031 001	DR-C 18x 30	13 ⁰ _{-0.2}	32 ^{+0.3} _{-0.1}	18	30	35	0.10
01 011 005	DR-A 18x 50			01 031 002	DR-C 18x 50				50	55	0.16
01 011 006	DR-A 18x 80			01 031 003	DR-C 18x 80				80	85	0.25
01 011 007	DR-A 27x 40	8	20 ±0.4	01 031 004	DR-C 27x 40	16 ^{+0.5} _{+0.3}	45 ^{+0.4} ₀	27	40	45	0.25
01 011 008	DR-A 27x 60			01 031 005	DR-C 27x 60				60	65	0.36
01 011 009	DR-A 27x100			01 031 006	DR-C 27x100				100	105	0.60
01 011 010	DR-A 38x 60	10	25 ±0.4	01 031 007	DR-C 38x 60	20 ^{+0.5} _{+0.2}	60 ^{+0.3} _{-0.2}	38	60	70	0.60
01 011 011	DR-A 38x 80			01 031 008	DR-C 38x 80				80	90	0.79
01 011 012	DR-A 38x120			01 031 009	DR-C 38x120				120	130	1.16
01 011 023	DR-A 45x 80	12	35 ±0.5	01 031 023	DR-C 45x 80	24 ^{+0.5} _{+0.2}	75 ^{+0.3} _{-0.2}	45	80	90	1.25
01 011 024	DR-A 45x100			01 031 024	DR-C 45x100				100	110	1.53
01 011 025	DR-A 45x150								150	160	2.30
01 011 026	DR-A 50x120	M12x40	40 ±0.5	01 031 025	DR-C 50x120	30 ^{+0.5} _{+0.2}	80 ^{+0.3} _{-0.2}	50	120	130	2.07
01 011 027	DR-A 50x200			01 031 026	DR-C 50x200				200	210	3.45
01 011 028	DR-A 50x300								300	310	5.15

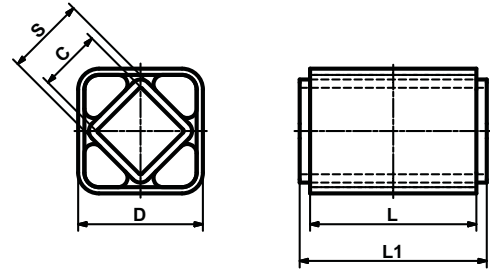
List of torque and loads on page 1.5.

Further information to customized elements and installation examples as from page 1.14.

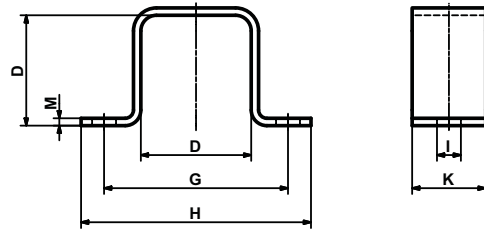


Rubber Suspension Units

Type DR-S



Accessory Bracket BR



Rubber Suspension Units

DR-S		□C	□D	□S	L	L1 ±0.2	Weight [kg]
01 021 001	DR-S 11x 20	8 ^{+0.25} ₀	20 ^{+0.3} _{-0.1}	11	20	25	0.04
01 021 002	DR-S 11x 30				30	35	0.05
01 021 003	DR-S 11x 50				50	55	0.08
01 021 004	DR-S 15x 25	11 ^{+0.25} ₀	27 ^{+0.4} ₀	15	25	30	0.07
01 021 005	DR-S 15x 40				40	45	0.12
01 021 006	DR-S 15x 60				60	65	0.18
01 021 007	DR-S 18x 30	12 ^{+0.25} ₀	32 ^{+0.3} _{-0.1}	18	30	35	0.12
01 021 008	DR-S 18x 50				50	55	0.20
01 021 009	DR-S 18x 80				80	85	0.32
01 021 010	DR-S 27x 40	22 ^{+0.25} ₀	45 ^{+0.4} ₀	27	40	45	0.26
01 021 011	DR-S 27x 60				60	65	0.39
01 021 012	DR-S 27x100				100	105	0.65
01 021 013	DR-S 38x 60	30 ^{+0.25} ₀	60 ^{+0.3} _{-0.2}	38	60	70	0.67
01 021 014	DR-S 38x 80				80	90	0.90
01 021 015	DR-S 38x120				120	130	1.32
01 021 026	DR-S 45x 80	35 ^{+0.4} ₀	75 ^{+0.3} _{-0.2}	45	80	90	1.42
01 021 027	DR-S 45x100				100	110	1.76
01 021 028	DR-S 45x150				150	160	2.62
01 021 029	DR-S 50x120	40 ^{+0.4} ₀	80 ^{+0.3} _{-0.2}	50	120	130	2.37
01 021 030	DR-S 50x200				200	210	3.91
01 021 031	DR-S 50x300				300	310	5.80

Bracket BR		D	G	H	øI	K	M	Weight [kg]
01 500 001	BR 11	20	37	50	6	20	2	0.03
01 500 002	BR 15	27	50	65	7	25	2	0.04
01 500 003	BR 18	32	60	80	9	30	2.5	0.08
01 500 004	BR 27	45	80	105	11	35	3	0.15
01 500 005	BR 38	60	100	125	13	40	4	0.27
01 500 026	BR 45	75	120	150	13	45	5	0.48
01 500 027	BR 50	80	135	175	18	50	6	0.71

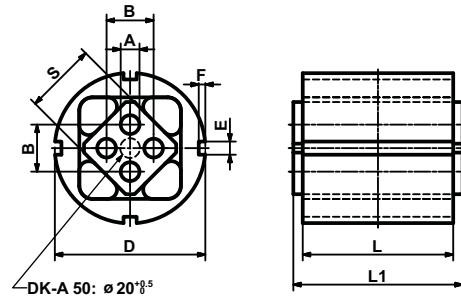
List of torque and loads on page 1.5.

Further information to customized elements and installation examples as from page 1.14.

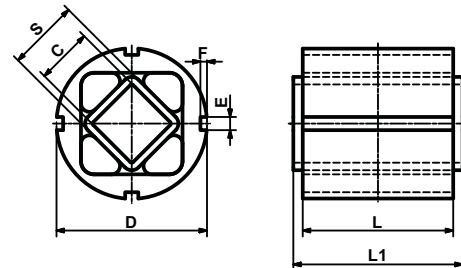


Rubber Suspension Units

Type DK-A



Type DK-S



DK-A				DK-S				øD	E	F	□S	L	L1 ±0.2	
Art. No.	Type	øA ^{+0.5} / ₀	B	Weight [kg]	Art. No.	Type	□C							Weight [kg]
					01 081 001	DK-S 11x 20		0.03				20	25	
					01 081 002	DK-S 11x 30	8 ^{+0.25} / ₀	0.05	28 ^{+0.5} / _{+0.1}	4	2.5	11	30	35
					01 081 003	DK-S 11x 50		0.07				50	55	
01 071 001	DK-A 15x 25			0.05	01 081 004	DK-S 15x 25		0.06				25	30	
01 071 002	DK-A 15x 40	5	10 ±0.2	0.08	01 081 005	DK-S 15x 40	11 ^{+0.25} / ₀	0.10	36 ^{+0.5} / _{+0.1}	5	2.5	15	40	45
01 071 003	DK-A 15x 60			0.12	01 081 006	DK-S 15x 60		0.14				60	65	
01 071 004	DK-A 18x 30			0.10	01 081 007	DK-S 18x 30		0.13				30	35	
01 071 005	DK-A 18x 50	6	12 ±0.3	0.16	01 081 008	DK-S 18x 50	12 ^{+0.25} / ₀	0.20	45 ^{+0.6} / _{+0.1}	5	2.5	18	50	55
01 071 006	DK-A 18x 80			0.26	01 081 009	DK-S 18x 80		0.33				80	85	
01 071 007	DK-A 27x 40			0.25	01 081 010	DK-S 27x 40		0.27				40	45	
01 071 008	DK-A 27x 60	8	20 ±0.4	0.37	01 081 011	DK-S 27x 60	22 ^{+0.25} / ₀	0.40	62 ^{+0.7} / _{+0.1}	6	3	27	60	65
01 071 009	DK-A 27x100			0.62	01 081 012	DK-S 27x100		0.66				100	105	
01 071 010	DK-A 38x 60			0.63	01 081 013	DK-S 38x 60		0.72				60	70	
01 071 011	DK-A 38x 80	10	25 ±0.4	0.83	01 081 014	DK-S 38x 80	30 ^{+0.25} / ₀	0.94	80 ^{+0.8} / _{+0.1}	7	3.5	38	80	90
01 071 012	DK-A 38x120			1.22	01 081 015	DK-S 38x120		1.37				120	130	
01 071 013	DK-A 45x 80			1.15	01 081 016	DK-S 45x 80		1.35				80	90	
01 071 014	DK-A 45x100	12	35 ±0.5	1.44	01 081 017	DK-S 45x100	35 ^{+0.4} / ₀	1.65	95 ^{+1.0} / _{+0.1}	8	4	45	100	110
01 071 015	DK-A 45x150			2.12	01 081 018	DK-S 45x150		2.44				150	160	
01 071 016	DK-A 50x120			2.35	01 081 019	DK-S 50x120		2.55				120	130	
01 071 017	DK-A 50x200	M12x40	40 ±0.5	3.75	01 081 020	DK-S 50x200	40 ^{+0.4} / ₀	4.21	108 ^{+1.2} / _{+0.1}	8	4	50	200	210
01 071 018	DK-A 50x300			5.60	01 081 021	DK-S 50x300		6.45				300	310	

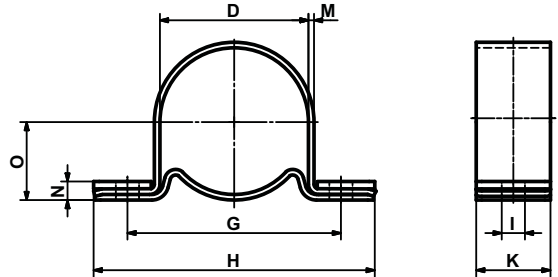
List of torque and loads on page 1.5.

Further information to customized elements and installation examples as from page 1.14.



Rubber Suspension Units

Accessory Bracket BK



Rubber Suspension Units

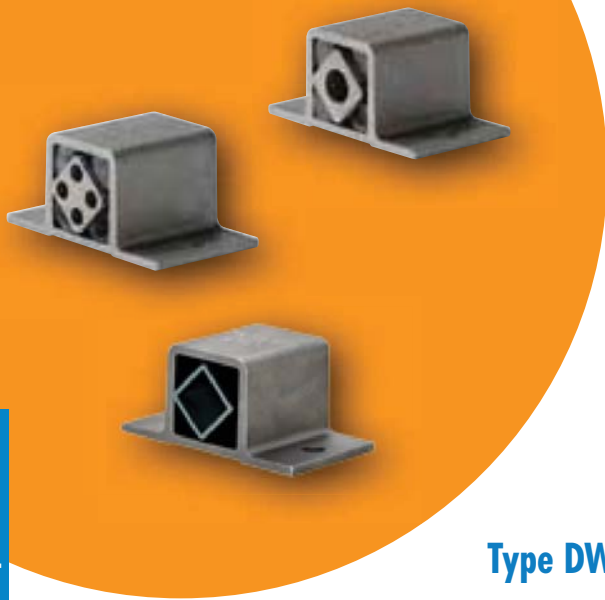
Bracket BK		D	G	H	øI	K	M	N	O	Weight [kg]
01 520 001	BK 11	28	45	60	6.5	20	1.5	6	15.5	0.04
01 520 002	BK 15	36	55	75	6.5	25	2	7	20.0	0.09
01 520 003	BK 18	45	68	90	8.5	30	2	8	24.5	0.14
01 520 004	BK 27	62	92	125	10.5	35	2.5	10	33.5	0.29
01 520 005	BK 38	80	115	150	12.5	40	3	11	43.0	0.45
01 520 006	BK 45	95	130	165	12.5	45	4	14	51.5	0.74
01 520 007	BK 50	108	152	195	16.5	50	4	15	58.0	0.93

With the use of the BK bracket the working position of the DK element can be selected in the full angle-range of 360°.



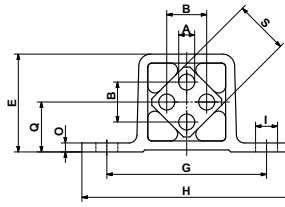
List of torque and loads on page 1.5.

Further information to customized elements and installation examples as from page 1.14.

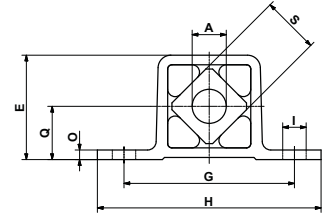


Rubber Suspension Units

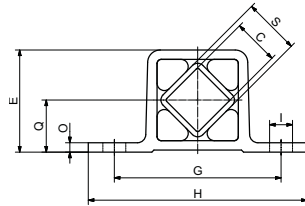
Type DW-A 15 to 38



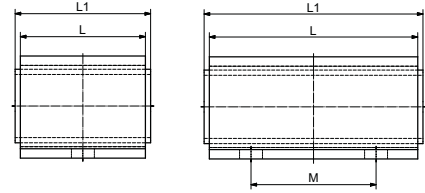
Type DW-C 15 to 38



Type DW-S 15 to 38



Length dimensions all types



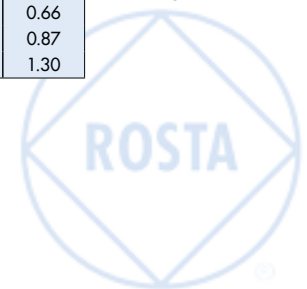
DW-A 15 to 38				DW-C 15 to 38				E	G	H	øI	O	Q	□S	L	L1 ^{-0.3}	M	Weight [kg]
Art. No.	Type	øA ^{+0.5}	B	Art. No.	Type	øA												
01 101 016	DW-A 15x 25	5	10 ±0.2	01 121 101	DW-C 15x 25	10 ^{+0.2}	29	50	65	7	3	15	15	25	30	-	0.05	
01 101 017	DW-A 15x 40			01 121 102	DW-C 15x 40									40	45	-	0.07	
01 101 018	DW-A 15x 60			01 121 103	DW-C 15x 60									60	65	40	0.11	
01 101 019	DW-A 18x 30	6	12 ±0.3	01 121 104	DW-C 18x 30	13 ⁰	35	60	80	9	3.5	18	18	30	35	-	0.08	
01 101 020	DW-A 18x 50			01 121 105	DW-C 18x 50									50	55	-	0.13	
01 101 021	DW-A 18x 80			01 121 106	DW-C 18x 80									80	85	50	0.21	
01 101 022	DW-A 27x 40	8	20 ±0.4	01 121 107	DW-C 27x 40	16 ^{+0.5}	49	80	105	11	4.5	25	27	40	45	-	0.21	
01 101 023	DW-A 27x 60			01 121 108	DW-C 27x 60									60	65	-	0.31	
01 101 024	DW-A 27x100			01 121 109	DW-C 27x100									100	105	60	0.52	
01 101 025	DW-A 38x 60	10	25 ±0.4	01 121 110	DW-C 38x 60	20 ^{+0.5}	67	100	125	13	6	34	38	60	70	-	0.59	
01 101 026	DW-A 38x 80			01 121 111	DW-C 38x 80									80	90	40	0.77	
01 101 027	DW-A 38x120			01 121 112	DW-C 38x120									120	130	80	1.15	

DW-S 15 to 38		□C	E	G	H	øI	O	Q	□S	L	L1 ±0.2	M	Weight [kg]			
Art. No.	Type															
01 111 201	DW-S 15x 25	11 ^{0.25}	29	50	65	7	3	15	15	25	30	-	0.06			
01 111 202	DW-S 15x 40												40	45	-	0.09
01 111 203	DW-S 15x 60												60	65	40	0.13
01 111 204	DW-S 18x 30	12 ^{0.25}	35	60	80	9	3.5	18	18	30	35	-	0.11			
01 111 205	DW-S 18x 50												50	55	-	0.18
01 111 206	DW-S 18x 80												80	85	50	0.28
01 111 207	DW-S 27x 40	22 ^{0.25}	49	80	105	11	4.5	25	27	40	45	-	0.23			
01 111 208	DW-S 27x 60												60	65	-	0.33
01 111 209	DW-S 27x100												100	105	60	0.56
01 111 210	DW-S 38x 60	30 ^{0.25}	67	100	125	13	6	34	38	60	70	-	0.66			
01 111 211	DW-S 38x 80												80	90	40	0.87
01 111 212	DW-S 38x120												120	130	80	1.30

DW-S 15 to 38
Inner part steel electrodeposited galvanic zinc coating

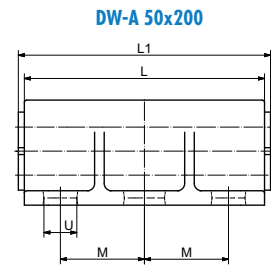
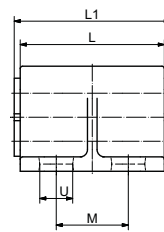
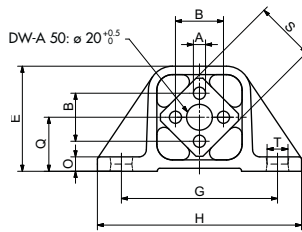
List of torque and loads on page 1.5.

Further information to customized elements and installation examples as from page 1.14.

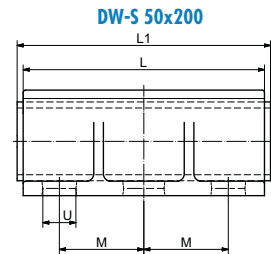
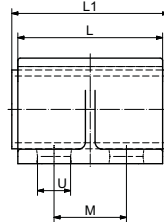
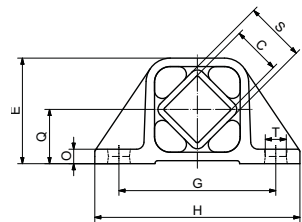


Rubber Suspension Units

Type DW-A 45 and 50



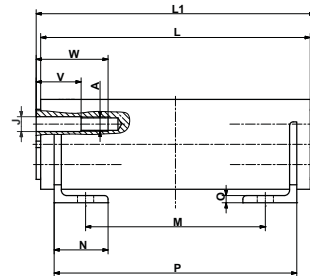
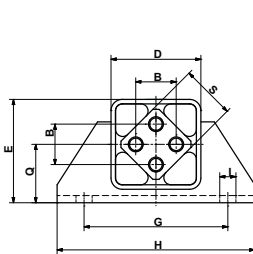
Type DW-S 45 and 50



Rubber Suspension Units

DW-A 45 and 50				DW-S 45 and 50															
Art. No.	Type	A	B	Weight [kg]	Art. No.	Type	□C	Weight [kg]	E	G	H	O	Q	□S	T	U	L	L1±0.2	M
01 101 015	DW-A 45x100	∅ 12 ^{+0.5}	35	2.3	01 111 015	DW-S 45x100	35 ^{+0.4}	2.6	80	115	145	8	41	45	13	26	100	110	58
01 101 013	DW-A 50x120			3.7	01 111 013	DW-S 50x120		4.0									120	130	60
01 101 028	DW-A 50x160	M12x40	40	5.0	01 111 028	DW-S 50x160	40 ^{+0.4}	5.3	88	130	170	12	45	50	17	27	160	170	70
01 101 014	DW-A 50x200			6.1	01 111 014	DW-S 50x200		6.6									200	210	70

Type DW-A 60 to 100



DW-A 60 to 100																Weight [kg]				
Art. No.	Type	A	B	D	E	G	H	∅l	∅j	N	O	Q	□S	V	W	L	L1 ±0.2	M	P	Weight [kg]
01 101 031	DW-A 60x150													40	70	150	160	60	130	8.9
01 101 032	DW-A 60x200	M16	45	100	115	160	220	18	16.5	60	8	65	60	50	80	200	210	100	170	11.1
01 101 033	DW-A 60x300													50	80	300	310	200	270	15.9
01 101 034	DW-A 70x200															200	210	100	170	15.4
01 101 035	DW-A 70x300	M20	50	120	140	200	260	22	20.5	65	9	80	70	50	90	300	310	200	270	21.7
01 101 036	DW-A 70x400															400	410	300	370	28.2
01 101 037	DW-A 80x200															200	210	80	170	21.7
01 101 038	DW-A 80x300	M20	60	136	153	220	280	22	20.5	80	10	85	80	50	90	300	310	180	270	30.4
01 101 039	DW-A 80x400															400	410	280	370	39.4
01 101 040	DW-A 100x250															250	260	110	220	43.8
01 101 041	DW-A 100x400	M24	75	170	195	300	380	26	25	100	12	110	100	50	100	400	410	260	370	64.7
01 101 042	DW-A 100x500															500	510	360	470	78.7

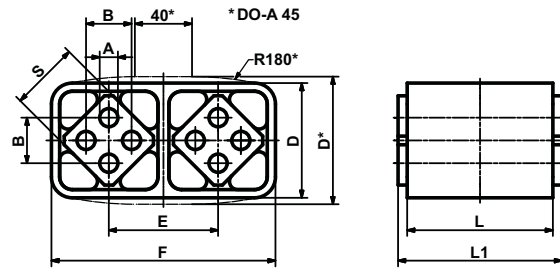
List of torque and loads on page 1.5.

Further information to customized elements and installation examples as from page 1.14.

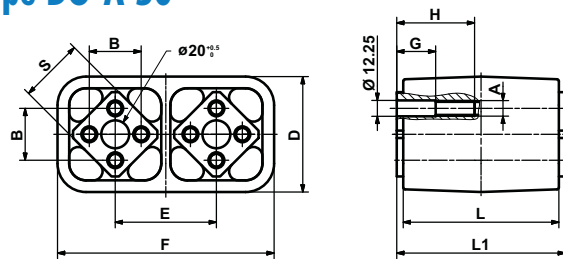


Rubber Suspension Units

Type DO-A 15 to 45



Type DO-A 50



DO-A		$\varnothing A^{+0.5}_0$	B	D	E	F	$\square S$	G	H	L	$L1 \pm 0.2$	Weight [kg]
01 041 001	DO-A 15x 25									25	30	0.07
01 041 002	DO-A 15x 40	5	10 ± 0.2	28 ± 0.15	25.5	53.5 ± 0.2	15	-	-	40	45	0.10
01 041 003	DO-A 15x 60									60	65	0.15
01 041 004	DO-A 18x 30									30	35	0.12
01 041 005	DO-A 18x 50	6	12 ± 0.3	34 ± 0.15	31	65 ± 0.2	18	-	-	50	55	0.20
01 041 006	DO-A 18x 80									80	85	0.30
01 041 007	DO-A 27x 40									40	45	0.32
01 041 008	DO-A 27x 60	8	20 ± 0.4	47 ± 0.15	44	91 ± 0.2	27	-	-	60	65	0.47
01 041 009	DO-A 27x100									100	105	0.78
01 041 010	DO-A 38x 60									60	70	0.87
01 041 011	DO-A 38x 80	10	25 ± 0.4	63 ± 0.2	60	123 ± 0.3	38	-	-	80	90	1.15
01 041 012	DO-A 38x120									120	130	1.68
01 041 013	DO-A 45x 80									80	90	1.85
01 041 014	DO-A 45x100	12	35 ± 0.5	85 ± 0.5	73	150 ± 1	45	-	-	100	110	2.25
01 041 015	DO-A 45x150									150	160	3.35
01 041 016	DO-A 50x120							30	60	120	130	5.50
01 041 019	DO-A 50x160	M12	40 ± 0.5	ca. 89	78	ca. 168	50	30	60	160	170	7.40
01 041 017	DO-A 50x200							40	70	200	210	8.50

List of torque and loads on page 1.5.

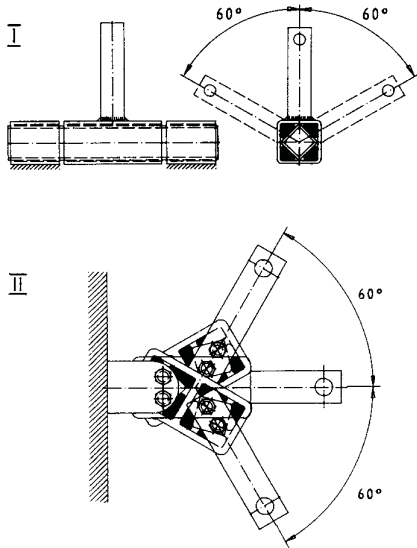
Further information to customized elements and installation examples as from page 1.14.



Rubber Suspension Units

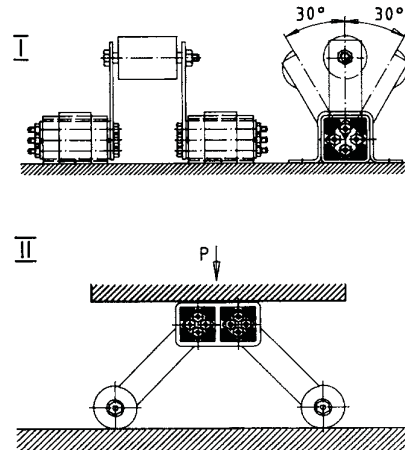
Serial Connection

Doubled oscillating angle
($\pm 60^\circ$) at constant torque of a single unit.

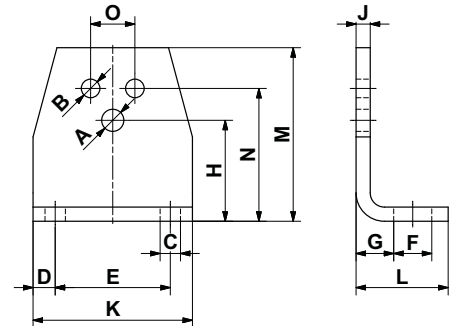


Parallel Connection

Doubled torque momentum
at constant oscillating angle ($\pm 30^\circ$).



Accessory Bracket WS



Bracket WS		Fit for tensioner devices			Fit for DR-A, DK-A, DW-A												Weight [kg]	
Art. No.	Type	SE size	ϕA	H	Element size	ϕB	N	O	C	D	E	F	G	J	K	L		M
06 590 001	WS 11-15	11	6.5	27	15	5.5	35	10	7	7.5	30	13	11.5	4	45	30	46	0.08
06 590 002	WS 15-18	15	8.5	34	18	6.5	44	12	7	7.5	40	13	13.5	5	55	32	58	0.15
06 590 003	WS 18-27	18	10.5	43	27	8.5	55	20	9.5	10	50	15.5	16.5	6	70	38	74	0.28
06 590 004	WS 27-38	27	12.5	57	38	10.5	75	25	11.5	12.5	65	21.5	21	8	90	52	98	0.70
06 590 005	WS 38-45	38	16.5	66	45	12.5	85	35	14	15	80	24	21	8	110	55	116	0.90
06 590 006	WS 45-50	45	20.5	80	50	12.5	110	40	18	20	100	30	26	10	140	66	140	1.80



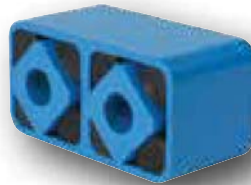
ROSTA Rubber Suspension Units

Short delivery time for the following special elements:

- Delivery summary for ROSTA rubber qualities

Rubber quality	Factor in relation to the list "torque and loads" (page 1.5)	Working temperature	Rubber	Specification
Rubmix 10	1.0	-40 ° to +80 °C	NR	- Standard quality - Highest elasticity - Lowest cold flow
Rubmix 15	approx. 1.4	-40 ° to +85 °C	SBR	- High torque values - Elements marked with black dot
Rubmix 20	approx. 1.0	-30 ° to +90 °C	CR	- Good oil-resistance - Elements marked with yellow dot
Rubmix 40	approx. 0.6	from +80 ° to +120 °C	EPDM-Silicone	- High temperature resistance - Elements marked with red dot
Rubmix 50	approx. 3.0	-35 ° to +90 °C	PUR	- Max. oscillation angle $\pm 20^\circ$ - Limited oscillation frequencies - No permanent water contact - Elements marked with green dot

- Elements with different length of housings and/or inner squares.
- DW light metal profiles with customized bores in the flange plates (quantity and position).
- Element with threaded bores in inner square: selectable for A or C inner squares, or full steel profile with required bores.
- Elements **DK-C**, **DO-C**, **DW-C** and **DO-S** (see page 1.4):



Not all sizes are available in all combinations. Please contact ROSTA.



ROSTA, your system supplier since more than 70 years



Zinc-plated double element structure
brush suspension in car wash site



Customized laser parts on housing
front wheel suspension for wheelchair



Customized nodular cast housing
swivel-mount for ripper comb in shredder



60° series connection (cast housings)
hinge bearing for truck engine hood



Cataphoretic housing protection, "Rubmix 40" inserts
marker light suspension for truck trailers



60° series connection (light metal profiles)
hinge bearing for glass shelf-cover



Stainless precision casting, machined core
swivel-mount for machine cover



Welded structure, "Rubmix 50" inserts
hinge for wheelchair-ramp on busses

Today, about 50% of all supplied rubber suspension elements are fully customized parts. With pleasure we do await your project definition for the development of an ingenious and cost-saving rubber suspension, fitting your specific requirements.