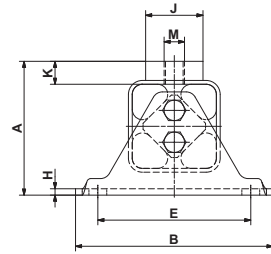


Anti-vibration Mounts

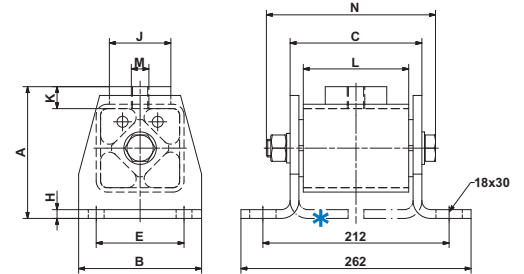
Type V



up to V 45



V 50



* Alternativ mounting position 180° turned.

Art. No.	Type	Load Gmin. – Gmax. [N] on X- and Z-axis												Weight [kg]
			A	B	C	E	øF	H	øJ	K	L	M	N	
05 011 001	V 15	300 – 800	49	80	51	55	9.5	3	20	10	40	M10	59	0.3
05 011 002	V 18	600 – 1'600	66	100	62	75	9.5	3.5	30	13	50	M10	74	0.7
05 011 003	V 27	1'300 – 3'000	84	130	73	100	11.5	4	40	14.5	60	M12	85	1.3
05 011 024	V 38	2'600 – 5'000	105	155	100	120	14	5	45	17.5	80	M16	117	2.7
05 011 005	V 45	4'500 – 8'000	127	190	122	140	18	6	60	22.5	100	M20	143	4.6
05 011 006	V 50	6'000 – 12'000	150	140	150	100	-	10	70	25	120	M20	193	7.5

Art. No.	Type	Natural frequency Gmin. – Gmax. [Hz]	Material structure (zinc-plated screws)
05 011 001	V 15	30 – 23	
05 011 002	V 18	25 – 15	
05 011 003	V 27	28 – 20	
05 011 024	V 38	14 – 12	
05 011 005	V 45	15 – 12	
05 011 006	V 50	12 – 10	

The max. load on **Y-axis** should not exceed **20%** of the X- resp. Z-axis capacity.

Momentary shock loads of 2.5 g in X- and Z-axis admissible.

Applicable on tensile, pressure and shear load.

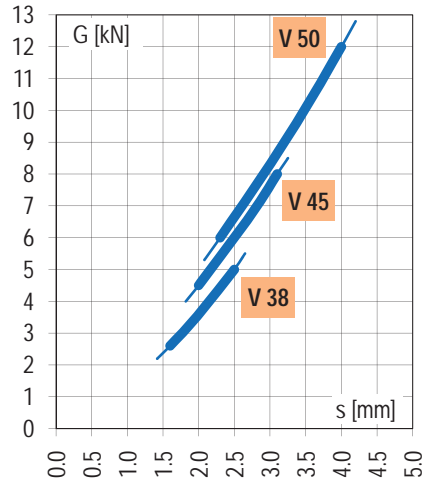
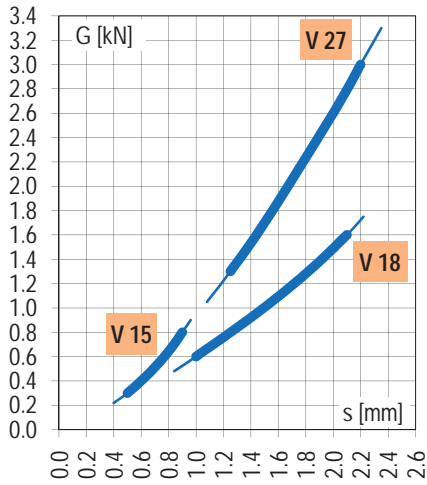
Further information to customized elements and installation examples as from page 3.14.

Anti-vibration Mounts

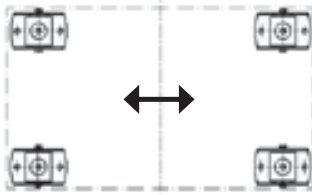
Type V

Deflection curves

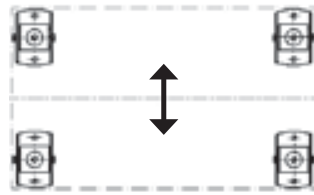
The mentioned deflection values are not suitable for type testing. Please consult also our tolerance data in the general catalogue, chapter "Technology".



Installation guidelines

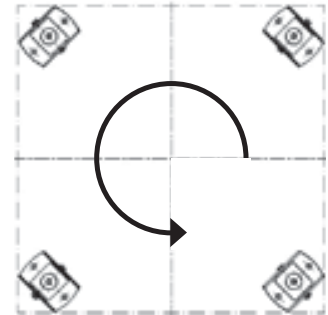


Dynamic forces longitudinal



Dynamic forces lateral

45° diagonal configuration by rotary motions. Reduced load capacities.



e. g. mixer, crusher installation

Applications

For active and passive isolation of vibrations and damping of solid-borne noise transmission in crushing plants, compressors, blowers, pumps, rotary converters, generators, mills, crane track supports, etc.