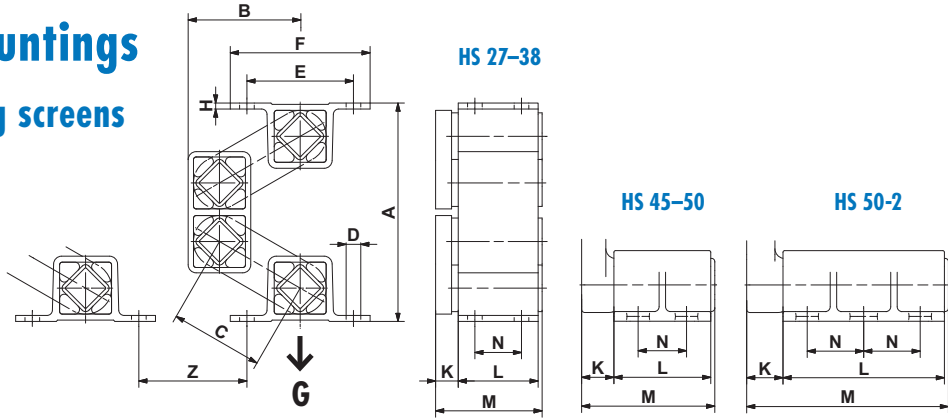


Oscillating Mountings

Type HS for hanging screens

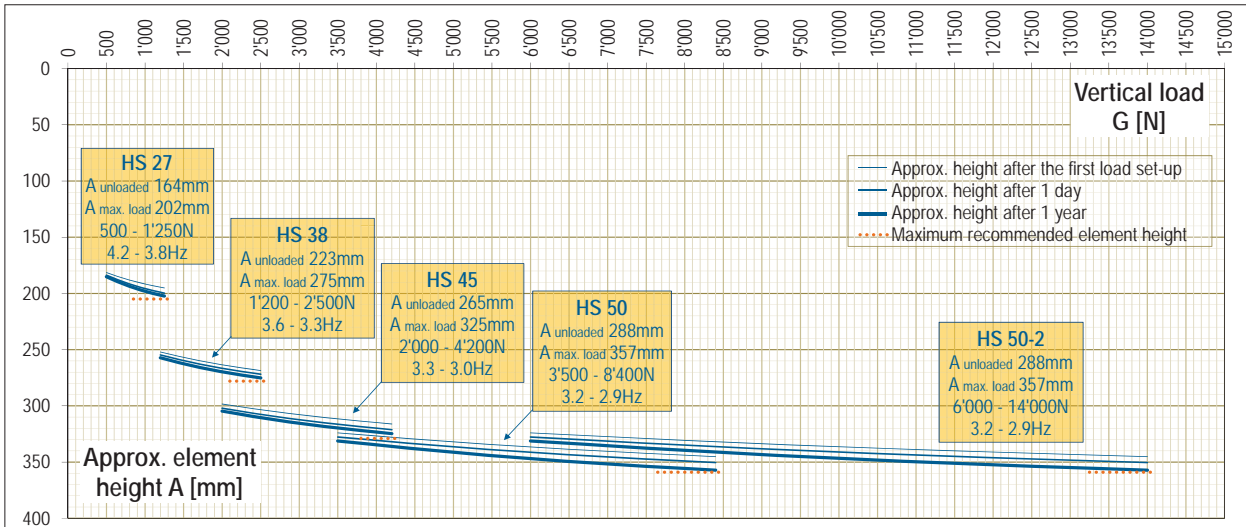


Art. No.	Type	Load capacity Gmin. – Gmax. [N]	A un- loaded	A* max. load	B un- loaded	B* max. load	C	D	E	F	H	K	L	M	N	Weight [kg]
07 311 001	HS 27	500 – 1'250	164	202	84	68	70	ø11	80	105	4.5	17	60	80	35	1.6
07 311 002	HS 38	1'200 – 2'500	223	275	114	92	95	ø13	100	125	6	21	80	104	40	4.9
07 311 003	HS 45	2'000 – 4'200	265	325	138	113	110	13x26	115	145	8	28	100	132	58	11.3
07 311 004	HS 50	3'500 – 8'400	288	357	148	118	120	17x27	130	170	12	40	120	165	60	20.2
07 311 005	HS 50-2	6'000 – 14'000	288	357	148	118	120	17x27	130	170	12	45	200	250	70	34.0

Art. No.	Type	Natural frequency Gmin. – Gmax. [Hz]	Z	Dynamic spring value		Capacity limits by different rpm						Light metal profile	Steel welded construction	Nodular cast iron	ROSTA blue painted
				cd vertical [N/mm]	cd horizontal [N/mm]	720 min ⁻¹		960 min ⁻¹		1440 min ⁻¹					
07 311 001	HS 27	4.2–3.8	70	65	32	12	3.5	10	5.2	8	9.3	x	x		x
07 311 002	HS 38	3.6–3.3	90	95	46	15	4.3	13	6.7	8	9.3	x	x		x
07 311 003	HS 45	3.3–3.0	100	142	70	17	4.9	14	7.2	8	9.3	x	x	x	x
07 311 004	HS 50	3.2–2.9	120	245	120	18	5.2	15	7.7	8	9.3			x	x
07 311 005	HS 50-2	3.2–2.9	120	410	200	18	5.2	15	7.7	8	9.3			x	x
				Values in nominal load range at 960 min ⁻¹ and sw of 8 mm		Acceleration > 9.3 g is not recommended						Material structure			

Oscillating Mountings

Element heights and cold flow behaviour HS



CE for HS 50 according 2006/42/EG (hanging load bearing capacities)

The HS Mountings shall be fastened with the foreseen amount of screws (existing fixation holes or slots) of quality 8.8 with consideration of the prescribed fastening torque.



* tensile load Gmax. and cold flow compensation (after approx. 1 year).