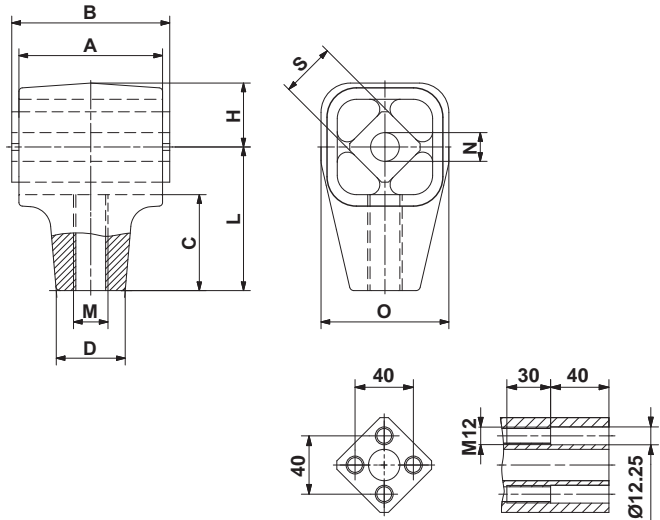


Oscillating Mountings for hanging Gyrotary Sifters

Type AV



Inner square AV 50 and AV 50L

Oscillating Mountings

| Art. No. | Type | G [N] per suspension | Dimensions | | | | | | | | | | |
|------------|---------------|----------------------|------------|-------------|------|----|----|-----|--------|---------------------|-----|----|--|
| | | | A | B ± 0.2 | C | □D | H | L | M | ∅N | O | □S | |
| 07 261 001 | AV 18 | 600 – 1'600 | 60 | 65 | 40.5 | 28 | 27 | 60 | M16 | 13 $_{-0.2}^{0}$ | 54 | 18 | |
| 07 271 001 | AV 18L | | | | | | | | M16-LH | | | | |
| 07 261 002 | AV 27 | 1'300 – 3'000 | 80 | 90 | 53 | 42 | 37 | 80 | M20 | 16 $_{+0.3}^{+0.5}$ | 74 | 27 | |
| 07 271 002 | AV 27L | | | | | | | | M20-LH | | | | |
| 07 261 003 | AV 38 | 2'600 – 5'000 | 100 | 110 | 67 | 48 | 44 | 100 | M24 | 20 $_{+0.2}^{+0.5}$ | 89 | 38 | |
| 07 271 003 | AV 38L | | | | | | | | M24-LH | | | | |
| 07 261 014 | AV 40 | 4'500 – 7'500 | 120 | 130 | 69.5 | 60 | 47 | 105 | M36 | 20 $_{+0.2}^{+0.5}$ | 93 | 40 | |
| 07 271 014 | AV 40L | | | | | | | | M36-LH | | | | |
| 07 261 005 | AV 50 | 6'000 – 16'000 | 200 | 210 | 85 | 80 | 59 | 130 | M42 | - | 116 | 50 | |
| 07 271 005 | AV 50L | | | | | | | | M42-LH | | | | |

G = max. load in N per suspension
Elements for higher load on request

| Art. No. | Type | Weight [kg] | Material structure | | | Bolting on inner square |
|------------|---------------|-------------|---------------------|---------------------------------|--------------------|---|
| | | | Inner square | Housing | Protection | |
| 07 261 001 | AV 18 | 0.4 | Light metal profile | Light metal casting | ROSTA blue painted | End-to-end screw or threaded bar quality 8.8. |
| 07 271 001 | AV 18L | | | | | |
| 07 261 002 | AV 27 | 1.0 | | | | |
| 07 271 002 | AV 27L | | | | | |
| 07 261 003 | AV 38 | 1.7 | | Nodular cast iron | | |
| 07 271 003 | AV 38L | | | | | |
| 07 261 014 | AV 40 | 5.0 | Nodular cast iron | M12 shoulder studs quality 8.8. | | |
| 07 271 014 | AV 40L | | | | | |
| 07 261 005 | AV 50 | 12.3 | Nodular cast iron | M12 shoulder studs quality 8.8. | | |
| 07 271 005 | AV 50L | | | | | |

General advises

The operating parameters shall not exceed the guidelines of the "frequency spectrum", see Technology part in the ROSTA general catalogue.

The threaded connection rod has to be provided by the customer.

Calculation Example

| Description | Symbol | Example Unit | Calculation formula |
|---|-------------|-----------------------|---|
| Total oscillating mass (material included) | m | 800 kg | Angle of oscillation $\beta = \arctan\left(\frac{R}{X}\right) [^\circ]$ |
| Eccentric radius ② | R | 20 mm | |
| Length of suspension rod | X | 600 mm | |
| Angle of oscillation (out of R and X), shall not exceed $\pm 2^\circ$ ② | $\beta \pm$ | 1.9 ° | Load per suspension rod $G = \frac{m \cdot g}{z} [N]$ |
| Revolutions | n_s | 230 min ⁻¹ | |
| Quantity of suspension rods | z | 4 pcs. | |
| Load per suspension rod | G | 1962 N | |
| Max. load capacity per rod with AV 27 mountings | G_{\max} | 3000 N | |

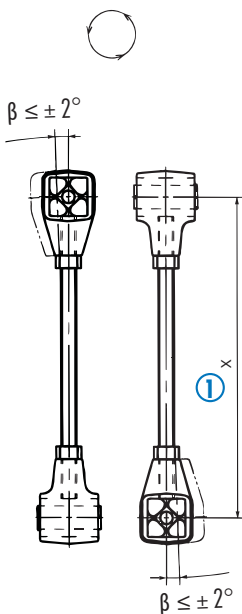
Element Selection:

4 pcs. AV 27 and 4 pcs. AV 27 L (left-hand threaded), the two AV elements per suspension rod have to be installed crosswise (90° offset).

Installation guidelines for AV mountings

- ① With the right-hand and left-hand threaded connection in the AV housing the length X of the suspension rod can easily be adjusted, this length has to be identical for all four suspension rods. **The indicated angular oscillating limitations have to be respected!**
- ② Only the **crosswise** (90° offset) installation of the two AV elements per suspension rod is guaranteeing for a harmonic and circular motion of the screen-box.
- ③ The crosswise installation of the AV elements has to be identical on all four suspension rods, e.g. all upper AV mounts shall stay 90° offset. (For the suspension or support of the discharge-ends of "ROTEX" sifter types the two elements per rod shall stay parallel to each other.)
- ④ To avoid unwanted tilting motions or screen-box distortions (by standstill) we do recommend the installation of the lower AV-brackets on the level of the center of gravity "S" of the screen-box.
- ⑤ Please consult ROSTA by the selection of AV elements for staying, free oscillating gyratory sifters.

② circular oscillation



③ elliptical oscillation

