

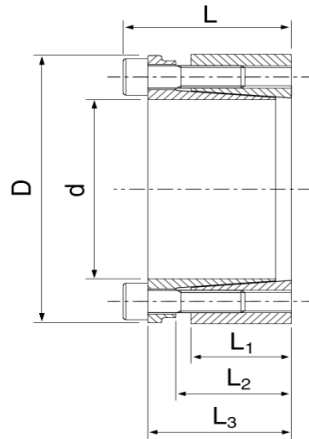
# Wellock 04, 06

เวอร์ทัส  
VIRTUS

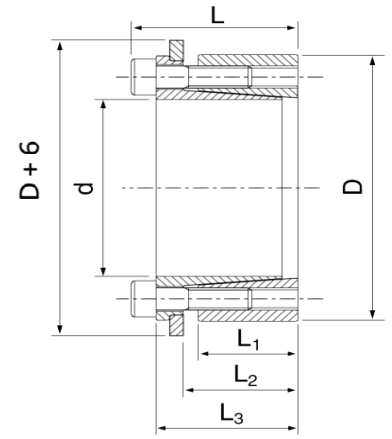
## Fitting Specification

SHAFT: h8

HUB: H8



WELLOCK 04



WELLOCK 06

Dimensions						Transmission		Shaft P N/mm <sup>2</sup>	Hub P1 N/mm <sup>2</sup>	Locking Screws DIN 912-12.9			Weight Kg
d mm	D mm	L1 mm	L2 mm	L3 mm	L mm	Axial Force Ft kN	Torque Mt Nm			Qty.	Size	Tightening Torque TS Nm	
19	47	26	31	39	45	37	350	228	98	4	M6x25	17	0.4
20	47	26	31	39	45	39	390	231	100	4	M6x25	17	0.4
22	47	26	31	39	45	40	440	220	95	4	M6x25	17	0.4
24	50	26	31	39	45	57	680	241	115	6	M6x25	17	0.5
25	50	26	31	39	45	52	654	230	105	6	M6x25	17	0.4
28	55	26	31	39	45	53	740	220	110	6	M6x25	17	0.5
30	55	26	31	39	45	53	790	200	120	6	M6x25	17	0.5
32	60	26	31	39	45	71	1130	230	114	8	M6x25	17	0.6
35	60	26	31	39	45	70	1230	200	119	8	M6x25	17	0.6
38	65	26	31	39	45	70	1325	210	124	8	M6x25	17	0.7
40	65	26	31	39	45	70	1400	200	125	8	M6x25	17	0.6
42	75	30	36	47	55	94	1982	236	140	6	M8x30	41	1.1
45	75	30	36	47	55	94	2123	236	140	6	M8x30	41	1.0
48	80	30	36	47	55	94	2265	218	135	6	M8x30	41	1.2
50	80	30	36	47	55	94	2359	218	135	6	M8x30	41	1.1
55	85	30	36	47	55	126	3458	223	145	8	M8x30	41	1.2
60	90	30	36	47	55	126	3772	198	157	8	M8x30	41	1.3
65	95	30	36	47	55	126	4087	213	140	8	M8x30	41	1.4
70	110	40	46	57	67	204	7136	225	143	8	M10x35	83	2.5
75	115	40	46	62	72	204	7645	210	138	8	M10x35	83	2.9
80	120	40	46	62	72	204	8155	200	130	8	M10x35	83	3.0
85	125	40	46	62	72	255	10831	210	145	10	M10x35	83	3.2
90	130	40	46	62	72	255	11469	200	138	10	M10x35	83	3.3
95	135	40	46	62	72	255	12106	210	148	10	M10x35	83	3.5
100	145	46	52	77	89	314	15700	216	148	8	M12x45	145	5.2
110	155	46	52	77	89	313	17200	196	139	8	M12x45	145	5.6
120	165	46	52	77	89	375	22500	216	156	10	M12x45	145	6.0
130	180	46	52	77	89	445	28931	196	140	12	M12x45	145	7.3
140	190	51	59	84	90	440	30800	196	145	8	M14x45	230	8.5
150	200	51	59	84	90	504	37817	205	153	10	M14x45	230	9.0
160	210	51	59	84	90	506	40500	205	155	10	M14x45	230	9.5
170	225	51	59	84	90	605	51426	163	123	12	M14x45	230	11.2
180	235	51	59	84	90	605	54451	160	120	12	M14x45	230	11.7