

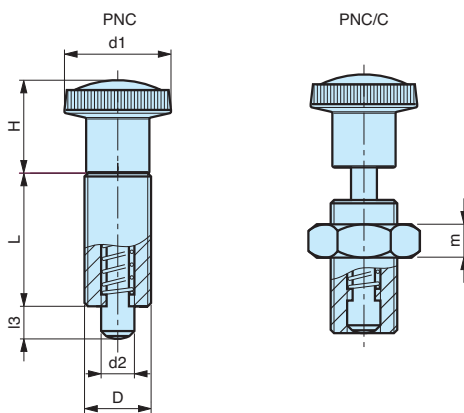
# PNC

## Pistoncino a molla Indexing Plungers

## Doigt d'indexage



**Versione C  
con controdamo  
with lock nut  
avec écrou**



Corpo in acciaio zincato filettato. Puntale in acciaio.  
Threaded zinc plated steel body. Zinc plated pin.  
Corps et doigt en acier.

codice	modello	d1	H	D	L	l3	d2	m
6394005	<b>PNC/22</b>	22	18	M10x1	24	5	5	6
6394010	<b>PNC/26</b>	26	23	M12x1,5	28	6	6	7
6394015	<b>PNC/32</b>	32	28	M16x1,5	36	8	8	8
6394020	<b>PNC/32</b>	32	28	M20x1,5	40	10	10	9
6394006	<b>PNC/22/C</b>	22	18	M10x1	24	5	5	6
6394011	<b>PNC/26/C</b>	26	23	M12x1,5	28	6	6	7
6394016	<b>PNC/32/C</b>	32	28	M16x1,5	36	8	8	8
6394021	<b>PNC/32/C</b>	32	28	M20x1,5	40	10	10	9

**NOTE:** Versione C con controdamo in acciaio zincato.  
Si fornisce, per quantità adeguate, il corpo brunito o in acciaio inox.

**Materiale:** Volantino zigrinato in tecnopolimero nero, finitura opaca.  
Mat black thermoplastic knurled knob.  
Bouton moleté en polyamide, surface mate.

MODELLO DEPOSITATO

## INOX - STAINLESS STEEL

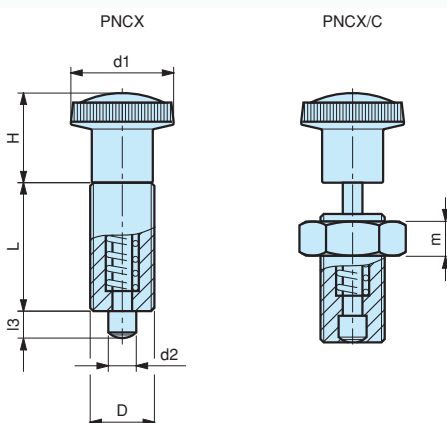
# PNCX

## Pistoncino a molla Indexing Plungers

## Doigt d'indexage



**Versione C  
con controdamo  
with lock nut  
avec écrou**



Corpo in acciaio inox filettato. Puntale in acciaio inox.  
Threaded stainless steel body. Stainless steel pin.  
Corps et doigt en acier inoxydable.

codice	modello	d1	H	D	L	l3	d2	m
6395007	<b>PNCX/22</b>	22	18	M10x1	24	5	5	6
6395012	<b>PNCX/26</b>	26	23	M12x1,5	28	6	6	7
6395017	<b>PNCX/32</b>	32	28	M16x1,5	36	8	8	8
6395022	<b>PNCX/32</b>	32	28	M20x1,5	40	10	10	9
6395008	<b>PNCX/22/C</b>	22	18	M10x1	24	5	5	6
6395013	<b>PNCX/26/C</b>	26	23	M12x1,5	28	6	6	7
6395018	<b>PNCX/32/C</b>	32	28	M16x1,5	36	8	8	8
6395023	<b>PNCX/32/C</b>	32	28	M20x1,5	40	10	10	9

**NOTE:** Versione C con controdamo in acciaio inox.

**Materiale:** Volantino zigrinato in tecnopolimero nero, finitura opaca.  
Mat black thermoplastic knurled knob.  
Bouton moleté en polyamide, surface mate.

MODELLO DEPOSITATO

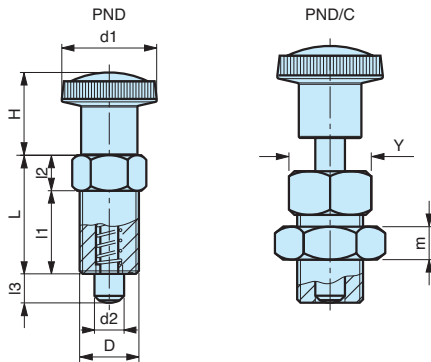
# PND

## Pistoncino a molla Indexing Plungers

## Doigt d'indexage 6 pans



**Versione C  
con controdamo  
with lock nut  
avec écrou**



Corpo in acciaio zincato filettato. Puntale in acciaio.  
Threaded zinc plated steel body. Zinc plated pin.  
Corps et doigt en acier.

codice	modello	d1	H	D	L	I1	I2	I3	d2	Y	m
6394205	<b>PND/22</b>	22	18	M10x1	25	16	9	5	5	12	6
6394210	<b>PND/26</b>	26	23	M12x1,5	29	19	10	6	6	14	7
6394215	<b>PND/32</b>	32	28	M16x1,5	37	25	12	8	8	19	8
6394220	<b>PND/32</b>	32	28	M20x1,5	41	27	14	10	10	22	9
6394206	<b>PND/22/C</b>	22	18	M10x1	25	16	9	5	5	12	6
6394211	<b>PND/26/C</b>	26	23	M12x1,5	29	19	10	6	6	14	7
6394216	<b>PND/32/C</b>	32	28	M16x1,5	37	25	12	8	8	19	8
6394221	<b>PND/32/C</b>	32	28	M20x1,5	41	27	14	10	10	22	9

**NOTE:** Versione C con controdamo in acciaio zincato.  
Si fornisce, per quantità adeguate, il corpo brunito o in acciaio inox.

**Materiale:** Volantino zigrinato in tecnopolimero nero, finitura opaca.  
Mat black thermoplastic knurled knob.  
Bouton moleté en polyamide, surface mate.

MODELLO DEPOSITATO

### INOX - STAINLESS STEEL

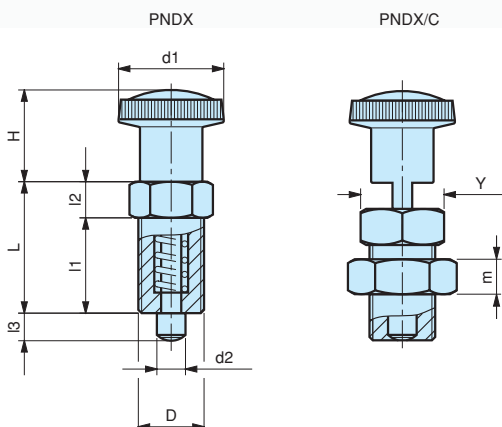
# PNDX

## Pistoncino a molla Indexing Plungers

## Doigt d'indexage 6 pans



**Versione C  
con controdamo  
with lock nut  
avec écrou**



Corpo in acciaio inox filettato. Puntale in acciaio inox.  
Threaded stainless steel body. Stainless steel pin.  
Corps et doigt en acier inoxydable.

codice	modello	d1	H	D	L	I1	I2	I3	d2	Y	m
6395207	<b>PNDX/22</b>	22	18	M10x1	25	16	9	5	5	12	6
6395212	<b>PNDX/26</b>	26	23	M12x1,5	29	19	10	6	6	14	7
6395217	<b>PNDX/32</b>	32	28	M16x1,5	37	25	12	8	8	19	8
6395222	<b>PNDX/32</b>	32	28	M20x1,5	41	27	14	10	10	22	9
6395208	<b>PNDX/22/C</b>	22	18	M10x1	25	16	9	5	5	12	6
6395213	<b>PNDX/26/C</b>	26	23	M12x1,5	29	19	10	6	6	14	7
6395218	<b>PNDX/32/C</b>	32	28	M16x1,5	37	25	12	8	8	19	8
6395223	<b>PNDX/32/C</b>	32	28	M20x1,5	41	27	14	10	10	22	9

**NOTE:** Versione C con controdamo in acciaio inox.

**Materiale:** Volantino zigrinato in tecnopolimero nero, finitura opaca.  
Mat black thermoplastic knurled knob.  
Bouton moleté en polyamide, surface mate.

MODELLO DEPOSITATO

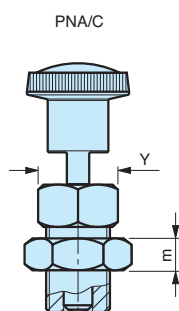
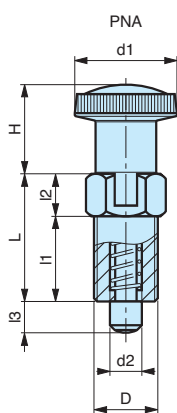
# PNA

## Pistoncino a molla Indexing Plungers

## Doigt d'indexage



**Versione C  
con controdamo  
with lock nut  
avec écrou**



Corpo in acciaio zincato filettato, con posizione di bloccaggio. Puntale in acciaio.  
Threaded zinc plated steel body with rest position. Zinc plated pin.  
Corps et doigt en acier avec blocage.

codice	modello	d1	H	D	L	I1	I2	I3	d2	Y	m
6394305	<b>PNA/22</b>	22	18	M10x1	25	16	9	5	5	12	6
6394310	<b>PNA/26</b>	26	23	M12x1,5	29	19	10	6	6	14	7
6394315	<b>PNA/32</b>	32	28	M16x1,5	37	25	12	8	8	19	8
6394320	<b>PNA/32</b>	32	28	M20x1,5	41	27	14	10	10	22	9
6394306	<b>PNA/22/C</b>	22	18	M10x1	25	16	9	5	5	12	6
6394311	<b>PNA/26/C</b>	26	23	M12x1,5	29	19	10	6	6	14	7
6394316	<b>PNA/32/C</b>	32	28	M16x1,5	37	25	12	8	8	19	8
6394321	<b>PNA/32/C</b>	32	28	M20x1,5	41	27	14	10	10	22	9

**NOTE:** Versione C con controdamo in acciaio zincato.  
Si fornisce, per quantità adeguate, il corpo brunito o in acciaio inox.

**Materiale:** Volantino zigrinato in tecnopolimero nero, finitura opaca.  
Mat black thermoplastic knurled knob.  
Bouton moleté en polyamide, surface mate.

MODELLO DEPOSITATO

### INOX - STAINLESS STEEL

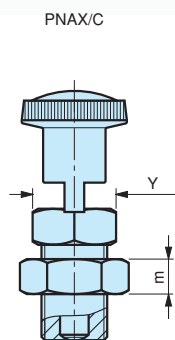
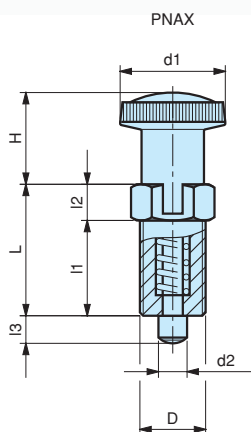
# PNAX

## Pistoncino a molla Indexing Plungers

## Doigt d'indexage



**Versione C  
con controdamo  
with lock nut  
avec écrou**



Corpo in acciaio inox filettato, con posizione di bloccaggio. Puntale in acciaio inox.  
Threaded stainless steel body with rest position. Stainless steel pin.  
Corps et doigt en acier inoxydable avec blocage.

codice	modello	d1	H	D	L	I1	I2	I3	d2	Y	m
6395307	<b>PNAX/22</b>	22	18	M10x1	25	16	9	5	5	12	6
6395312	<b>PNAX/26</b>	26	23	M12x1,5	29	19	10	6	6	14	7
6395317	<b>PNAX/32</b>	32	28	M16x1,5	37	25	12	8	8	19	8
6395322	<b>PNAX/32</b>	32	28	M20x1,5	41	27	14	10	10	22	9
6395308	<b>PNAX/22/C</b>	22	18	M10x1	25	16	9	5	5	12	6
6395313	<b>PNAX/26/C</b>	26	23	M12x1,5	29	19	10	6	6	14	7
6395318	<b>PNAX/32/C</b>	32	28	M16x1,5	37	25	12	8	8	19	8
6395323	<b>PNAX/32/C</b>	32	28	M20x1,5	41	27	14	10	10	22	9

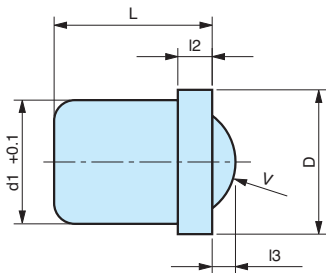
**NOTE:** Versione C con controdamo in acciaio inox.

**Materiale:** Volantino zigrinato in tecnopolimero nero, finitura opaca.  
Mat black thermoplastic knurled knob.  
Bouton moleté en polyamide, surface mate.

MODELLO DEPOSITATO

# APL/P

Pressore liscio a sfera e molla    Pousoir lisse à bille et ressort  
Smooth ball spring plunger



codice	modello	L	l2	d1+0.1	V	D	l3	N1	N2
7747005	<b>APL/4P</b>	5,0	1	4	3,0	4,6	0,7	3	7
7747010	<b>APL/5P</b>	6,0	1	5	4,0	5,6	1,0	4	7
7747015	<b>APL/6P</b>	7,0	1	6	5,0	6,5	1,5	6	12
7747020	<b>APL/8P</b>	9,0	1	8	6,5	8,5	1,8	6	12

**NOTE:** N1: Pressione molla precarico.  
Spring pressure preload.  
Pression MINI.

N2: Pressione molla carico Max.  
Spring pressure MAX load.  
Pression MAXI.

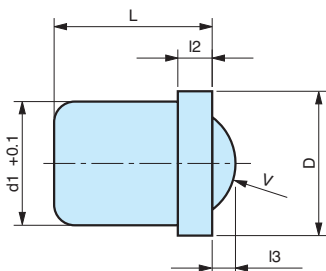
**Materiale:** Corpo in Tecnopolimero Nero. Sfera in acciaio temprato AISI 420.  
Molla in acciaio inox.  
Black thermoplastic body. Hardened stainless steel ball. Stainless steel spring.  
Corps en technopolymère noir. Bille en acier inox. Ressort en acier inox.

MODELLO DEPOSITATO

INOX - STAINLESS STEEL

# APL/I

Pressore liscio a sfera e molla    Pousoir lisse à bille et ressort  
Smooth ball spring plunger



codice	modello	L	l2	d1+0.1	V	D	l3	N1	N2
7747105	<b>APL/4I</b>	5,0	1	4	3,0	4,6	0,7	3	7
7747110	<b>APL/5I</b>	6,0	1	5	4,0	5,6	1,0	4	7
7747115	<b>APL/6I</b>	7,0	1	6	5,0	6,5	1,5	6	12
7747120	<b>APL/8I</b>	9,0	1	8	6,5	8,5	1,8	6	12
7747125	<b>APL/10I</b>	13,5	1,9	10,0	8,0	11,0	3,0	10	20

**NOTE:** N1: Pressione molla precarico.  
Spring pressure preload.  
Pression MINI.

N2: Pressione molla carico Max.  
Spring pressure MAX load.  
Pression MAXI.

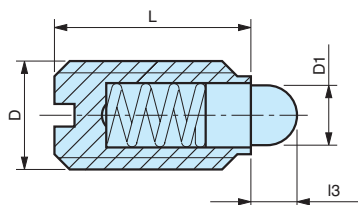
**Materiale:** Corpo in acciaio inox AISI 303. Sfera in acciaio inox temprato AISI 420. Molla in acciaio inox.  
Stainless steel body. Hardened stainless steel ball. Stainless steel spring. Corps en acier inoxydable. Bille en acier inox trempé. Ressort en acier inox.

MODELLO DEPOSITATO

# APP/A

Pressore a puntale e molla  
Bolt spring plunger

Poussoir avec embout  
et ressort



Corpo filettato, testa taglio a cacciavite.  
Threaded body, screwdriver slotted head.  
Corps fileté, tête fendue pour tournevis.

codice	modello	L	l3	D1	D	N1	N2
7747305	<b>APP/9A</b>	9	1,5	1,8	M 4	6	16
7747310	<b>APP/12A</b>	12	2,0	2,4	M 5	6	17
7747315	<b>APP/14A</b>	14	2,0	2,7	M 6	7	18
7747320	<b>APP/16A</b>	16	2,0	4,0	M 8	20	35
7747325	<b>APP/19A</b>	19	2,5	4,5	M 10	20	45
7747330	<b>APP/22A</b>	22	3,5	6,0	M 12	25	60
7747335	<b>APP/24A</b>	24	4,5	8,5	M 16	50	95
7747340	<b>APP/30A</b>	30	6,5	10,0	M 20	80	140
7747345	<b>APP/34A</b>	34	8,0	12,0	M 24	100	180

**NOTE:** Disponibile anche in versione con molla rinforzata (R).  
Available also with heavy end-force spring (R).  
Disponible avec ressort à pression renforcée (R).

N1: Pressione molla precarico.  
Spring pressure preload.  
Pression MINI.

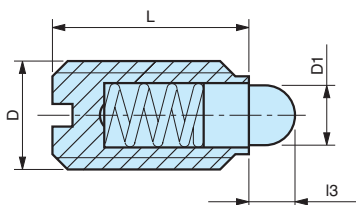
N2: Pressione molla carico Max.  
Spring pressure MAX load.  
Pression MAXI.

**Materiale:** Corpo filettato in acciaio brunito. Puntale in acciaio temprato. Molla in acciaio inox.  
Black oxide steel threaded body. Hardened steel bolt. Stainless steel spring.  
Corps fileté en acier bruni. Embout en acier trempé. Ressort en acier inoxydable.

# APP/I

**Pressore a puntale e molla**  
**Bolt spring plunger**

**Poussoir avec embout**  
**et ressort**



Corpo filettato, testa taglio a cacciavite.  
 Threaded body, screwdriver slotted head.  
 Corps fileté, tête fendue pour tournevis.

codice	modello	L	l3	D1	D	N1	N2
7747205	<b>APP/9I</b>	9	1,5	1,8	M 4	6	16
7747210	<b>APP/12I</b>	12	2,0	2,4	M 5	6	17
7747215	<b>APP/14I</b>	14	2,0	2,7	M 6	7	18
7747220	<b>APP/16I</b>	16	2,0	4,0	M 8	20	35
7747225	<b>APP/19I</b>	19	2,5	4,5	M 10	20	45
7747230	<b>APP/22I</b>	22	3,5	6,0	M 12	25	60
7747235	<b>APP/24I</b>	24	4,5	8,5	M 16	50	95
7747240	<b>APP/30I</b>	30	6,5	10,0	M 20	80	140
7747245	<b>APP/34I</b>	34	8,0	12,0	M 24	100	180

**NOTE:** Disponibile anche in versione con molla rinforzata (R).  
 Available also with heavy end-force spring (R).  
 Disponible avec ressort à pression renforcée (R).

N1: Pressione molla precarico.  
 Spring pressure preload.  
 Pression MINI.

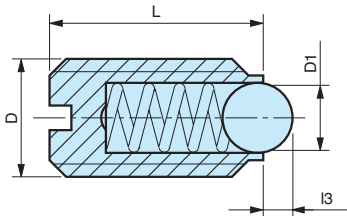
N2: Pressione molla carico Max.  
 Spring pressure MAX load.  
 Pression MAXI.

**Materiale:** Corpo, puntale e molla in acciaio inox.  
 Stainless steel body, bolt and spring.  
 Corps, embout et ressort en acier inoxydable.

# APS/A

## Pressore a sfera e molla Ball spring plunger

## Poussoir à bille et ressort



Corpo filettato, testa taglio a cacciavite.  
Threaded body, screwdriver slotted head.  
Corps fileté, tête fendue pour tournevis.

codice	modello	L	I3	D1	D	N1	N2
7747405	<b>APS/7A</b>	7	0,5	1,5	M 3	2	3
7747410	<b>APS/9A</b>	9	0,8	2,5	M 4	4	10
7747415	<b>APS/12A</b>	12	0,9	3	M 5	6	11
7747420	<b>APS/14A</b>	14	1,0	3,5	M 6	9	15
7747425	<b>APS/16A</b>	16	1,5	5	M 8	18	30
7747430	<b>APS/19A</b>	19	2,0	6	M 10	20	40
7747435	<b>APS/22A</b>	22	2,5	8	M 12	30	55
7747440	<b>APS/24A</b>	24	3,5	10	M 16	65	120
7747445	<b>APS/30A</b>	30	4,5	12	M 20	90	140
7747450	<b>APS/34A</b>	34	5,5	15	M 24	125	180

**NOTE:** Disponibile anche in versione con molla rinforzata (R).  
Available also with heavy end-force spring (R).  
Disponible avec ressort à pression renforcée (R).

N1: Pressione molla precarico.  
Spring pressure preload.  
Pression MINI.

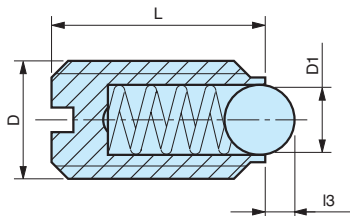
N2: Pressione molla carico Max.  
Spring pressure MAX load.  
Pression MAXI.

**Materiale:** Corpo filettato in acciaio brunito. Sfera in acciaio inox. Molla in acciaio inox.  
Black oxide steel threaded body. Stainless steel ball. Stainless steel spring.  
Corps fileté en acier bruni. Bille en acier inoxydable.  
Ressort en acier inoxydable.

# APS/I

## Pressore a sfera e molla Ball spring plunger

## Poussoir à bille et ressort



Corpo filettato, testa taglio a cacciavite.  
Threaded body, screwdriver slotted head.  
Corps fileté, tête fendue pour tournevis.

codice	modello	L	l3	D1	D	N1	N2
7747505	<b>APS/7I</b>	7	0,5	1,5	M 3	2	3
7747510	<b>APS/9I</b>	9	0,8	2,5	M 4	4	10
7747515	<b>APS/12I</b>	12	0,9	3	M 5	6	11
7747520	<b>APS/14I</b>	14	1,0	3,5	M 6	9	15
7747525	<b>APS/16I</b>	16	1,5	5	M 8	18	30
7747530	<b>APS/19I</b>	19	2,0	6	M 10	20	40
7747535	<b>APS/22I</b>	22	2,5	8	M 12	30	55
7747540	<b>APS/24I</b>	24	3,5	10	M 16	65	120
7747545	<b>APS/30I</b>	30	4,5	12	M 20	90	140
7747550	<b>APS/34I</b>	34	5,5	15	M 24	125	180

**NOTE:** Disponibile anche in versione con molla rinforzata (R).  
Available also with heavy end-force spring (R).  
Disponible avec ressort à pression renforcée (R).

N1: Pressione molla precarico.  
Spring pressure preload.  
Pression MINI.

N2: Pressione molla carico Max.  
Spring pressure MAX load.  
Pression MAXI.

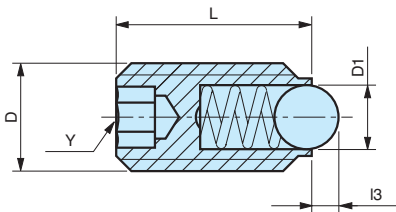
**Materiale:** Corpo filettato in acciaio inox. Sfera in acciaio inox. Molla in acciaio inox.  
Stainless steel body, ball and spring.  
Corps, bille et ressort en acier inoxydable.



# APSE/A

Pressore a sfera e molla  
Ball spring plunger

Poussoir à bille et ressort



Corpo filettato, testa a cava esagonale.  
Threaded body, hexagonal socket.  
Corps fileté avec empreinte creuse hexagonale.

codice	modello	L	l3	D1	D	Y	N1	N2
7747900	<b>APSE/9A</b>	9	0,5	1,5	M 3	1,5	1,5	3
7747903	<b>APSE/10A</b>	10	0,8	2,5	M 4	2	4	10
7747906	<b>APSE/14A</b>	14	0,9	3	M 5	3	6	11
7747909	<b>APSE/15A</b>	15	1,0	3,5	M 6	3	9	13
7747912	<b>APSE/16A</b>	16	1,5	5	M 8	4	15	30
7747915	<b>APSE/23A</b>	23	2,0	6	M 10	5	20	35
7747918	<b>APSE/26A</b>	26	2,5	8	M 12	6	30	55
7747921	<b>APSE/33A</b>	33	3,5	10	M 16	8	65	125
7747924	<b>APSE/43A</b>	43	4,5	12	M 20	10	80	160
7747927	<b>APSE/48A</b>	48	5,5	15	M 24	12	90	180

**NOTE:** Disponibile anche in versione con molla rinforzata (R).  
Available also with heavy end-force spring (R).  
Disponibile avec ressort à pression renforcée (R).

N1: Pressione molla precarico.  
Spring pressure preload.  
Pression MINI.

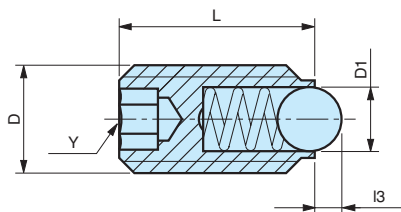
N2: Pressione molla carico Max.  
Spring pressure MAX load.  
Pression MAXI.

**Materiale:** Corpo filettato in acciaio brunito. Sfera in acciaio inox. Molla in acciaio inox.  
Black oxide steel threaded body. Stainless steel ball. Stainless steel spring.  
Corps fileté en acier bruni. Bille en acier inoxydable.  
Ressort en acier inoxydable.

# APSE/I

Pressore a sfera e molla  
Ball spring plunger

Poussoir à bille et ressort



Corpo filettato, testa a cava esagonale.  
Threaded body, hexagonal socket.  
Corps fileté avec empreinte creuse hexagonale.

codice	modello	L	l3	D1	D	Y	N1	N2
7747950	<b>APSE/9I</b>	9	0,5	1,5	M 3	1,5	1,5	3
7747953	<b>APSE/10I</b>	10	0,8	2,5	M 4	2	4	10
7747956	<b>APSE/14I</b>	14	0,9	3	M 5	3	6	11
7747959	<b>APSE/15I</b>	15	1,0	3,5	M 6	3	9	13
7747962	<b>APSE/16I</b>	16	1,5	5	M 8	4	15	30
7747965	<b>APSE/23I</b>	23	2,0	6	M 10	5	20	35
7747968	<b>APSE/26I</b>	26	2,5	8	M 12	6	30	55
7747971	<b>APSE/33I</b>	33	3,5	10	M 16	8	65	125
7747974	<b>APSE/43I</b>	43	4,5	12	M 20	10	80	160
7747977	<b>APSE/48I</b>	48	5,5	15	M 24	12	90	180

**NOTE:** Disponibile anche in versione con molla rinforzata (R).  
Available also with heavy end-force spring (R).  
Disponibile avec ressort à pression renforcée (R).

N1: Pressione molla precarico.  
Spring pressure preload.  
Pression MINI.

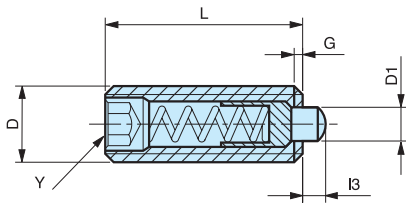
N2: Pressione molla carico Max.  
Spring pressure MAX load.  
Pression MAXI.

**Materiale:** Corpo filettato in acciaio inox. Sfera in acciaio inox. Molla in acciaio inox.  
Stainless steel body, ball and spring.  
Corps, bille et ressort en acier inoxydable.

# APT/A

Pressore a puntale e molla  
Bolt spring plunger

Poussoir avec embout  
et ressort



Corpo filettato, testa a cava esagonale.  
Threaded body, hexagonal locking.  
Corps fileté, tête avec empreinte creuse hexagonale.

codice	modello	D1	L	l3	G	Y	D	N1	N2
7747605	<b>APT/12A</b>	1,0	12	1,0	0,5	0,7	M 3	1,7	3,5
7747610	<b>APT/15A</b>	1,5	15	1,5	0,6	1,3	M 4	5	16
7747615	<b>APT/18A</b>	2,4	18	2,3	0,8	1,5	M 5	6	20
7747620	<b>APT/20A</b>	2,7	20	2,5	0,9	2,0	M 6	7	20
7747625	<b>APT/22A</b>	3,5	22	3,0	1,4	2,5	M 8	9	35
7747630	<b>APT/22AA</b>	4,0	22	3,0	1,4	3,0	M 10	9	35
7747635	<b>APT/28A</b>	6,0	28	4,0	2,0	4,0	M 12	10	55
7747640	<b>APT/32A</b>	7,5	32	5,0	2,5	5,0	M 16	45	100
7747645	<b>APT/40A</b>	10,0	40	7,0	3,0	6,0	M 20	70	140
7747650	<b>APT/52A</b>	12,0	52	10,0	3,0	8,0	M 24	80	180

**NOTE:** Disponibile anche in versione con molla rinforzata (R).  
Available also with heavy end-force spring (R).  
Disponibile avec ressort à pression renforcée (R).

N1: Pressione molla precarico.  
Spring pressure preload.  
Pression MINI.

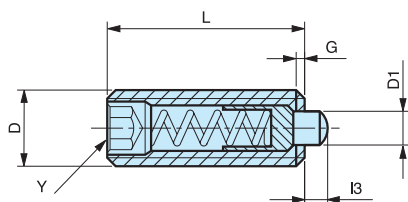
N2: Pressione molla carico Max.  
Spring pressure MAX load.  
Pression MAXI.

**Materiale:** Corpo filettato in acciaio brunito. Puntale in acciaio temprato.  
Molla in acciaio inox.  
Black oxide steel threaded body. Hardened steel bolt.  
Stainless steel spring.  
Corps fileté en acier bruni. Embout en acier trempé.  
Ressort en acier inoxydable.

# APT/I

**Pressore a puntale e molla**  
**Bolt spring plunger**

**Poussoir avec embout**  
**et ressort**



Corpo filettato, testa a cava esagonale.  
Threaded body, hexagonal locking.  
Corps fileté, tête avec empreinte creuse hexagonale.

codice	modello	D1	L	I3	G	Y	D	N1	N2
7747810	<b>APT/15I</b>	1,5	15	1,5	0,6	1,3	M 4	5	16
7747815	<b>APT/18I</b>	2,4	18	2,3	0,8	1,5	M 5	6	20
7747820	<b>APT/20I</b>	2,7	20	2,5	0,9	2,0	M 6	7	20
7747825	<b>APT/22I</b>	3,5	22	3,0	1,4	2,5	M 8	9	35
7747830	<b>APT/22IA</b>	4,0	22	3,0	1,4	3,0	M 10	9	35
7747835	<b>APT/28I</b>	6,0	28	4,0	2,0	4,0	M 12	10	55
7747840	<b>APT/32I</b>	7,5	32	5,0	2,5	5,0	M 16	45	100
7747845	<b>APT/40I</b>	10,0	40	7,0	3,0	6,0	M 20	70	140
7747850	<b>APT/52I</b>	12,0	52	10,0	3,0	8,0	M 24	80	180

**NOTE:** Disponibile anche in versione con molla rinforzata (R).  
Available also with heavy end-force spring (R).  
Disponible avec ressort à pression renforcée (R).

N1: Pressione molla precarico.  
Spring pressure preload.  
Pression MINI.

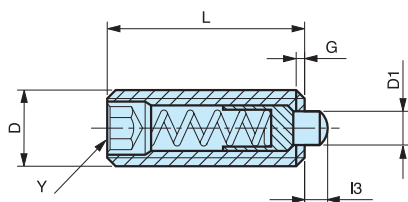
N2: Pressione molla carico Max.  
Spring pressure MAX load.  
Pression MAXI.

**Materiale:** Corpo, puntale e molla in acciaio inox.  
Stainless steel body, bolt and spring.  
Corps, embout et ressort en acier inoxydable.

# APT/P

Pressore a puntale e molla  
Bolt spring plunger

Poussoir avec embout  
et ressort



Corpo filettato, testa a cava esagonale.  
Threaded body, hexagonal locking.  
Corps fileté, tête avec empreinte creuse hexagonale.

codice	modello	D1	L	I3	G	Y	D	N1	N2
7747710	<b>APT/15P</b>	1,5	15	1,5	0,6	1,3	M 4	5	16
7747715	<b>APT/18P</b>	2,4	18	2,3	0,8	1,5	M 5	6	20
7747720	<b>APT/20P</b>	2,7	20	2,5	0,9	2,0	M 6	7	20
7747725	<b>APT/22P</b>	3,5	22	3,0	1,4	2,5	M 8	9	35
7747730	<b>APT/22PA</b>	4,0	22	3,0	1,4	3,0	M 10	9	35
7747735	<b>APT/28P</b>	6,0	28	4,0	2,0	4,0	M 12	10	55
7747740	<b>APT/32P</b>	7,5	32	5,0	2,5	5,0	M 16	45	100

**NOTE:** Disponibile anche in versione con molla rinforzata (R).  
Available also with heavy end-force spring (R).  
Disponible avec ressort à pression renforcée (R).

N1: Pressione molla precarico.  
Spring pressure preload.  
Pression MINI.

N2: Pressione molla carico Max.  
Spring pressure MAX load.  
Pression MAXI.

**Materiale:** Corpo filettato in acciaio brunito. Puntale in tecnopolimero.  
Molla in acciaio inox.  
Black oxide steel threaded body. Thermoplastic bolt.  
Stainless steel spring.  
Corps fileté en acier bruni. Embout en technopolymère.  
Ressort en acier inoxydable.