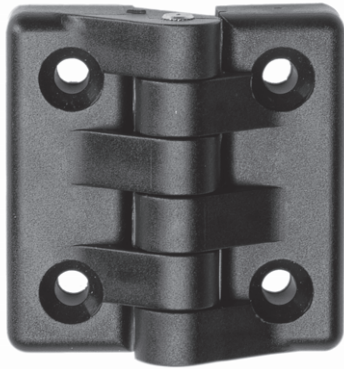


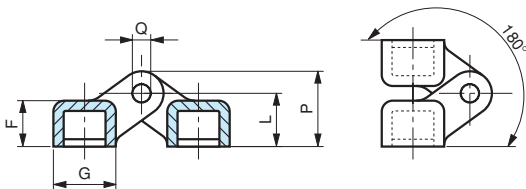
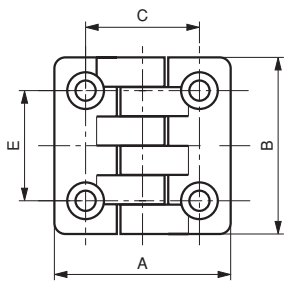
# C

## Cerniera Nylon plastic hinges

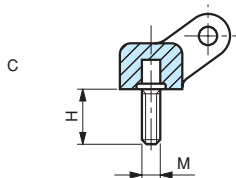
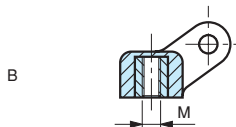
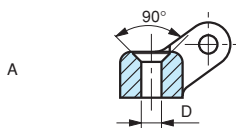
## Charnière



cod.	modello	A	B	C	E	F	G	L	P	Q	M	H	D
6388010	<b>C40/A</b>	40	40	25,5	25,5	10	14	11,5	16,5	4	/	/	4,2
6388020	<b>C48/A</b>	48	48,1	31	30	12,5	17	14,5	20,5	5	/	/	5,5
6388100	<b>C48/B</b>	48	48,1	31	30	12,5	17	14,5	20,5	5	M5	/	/
6388110	<b>C48/B</b>	48	48,1	31	30	12,5	17	14,5	20,5	5	M6	/	/
6388200	<b>C48/C</b>	48	48,1	31	30	12,5	17	14,5	20,5	5	M5	15	/
6388030	<b>C65/A</b>	65	64,9	40	40	14	24	17	25	6	/	/	6,5
6388120	<b>C65/B</b>	65	64,9	40	40	14	24	17	25	6	M6	/	/
6388210	<b>C65/C</b>	65	64,9	40	40	14	24	17	25	6	M6	20	/
6388040	<b>C98/A</b>	98	97,9	63	60	21	35	25	37	8	/	/	10,5
6388130	<b>C98/B</b>	98	97,9	63	60	21	35	25	37	8	M10	/	/
6388220	<b>C98/C</b>	98	97,9	63	60	21	35	25	37	8	M10	20	/



Versioni



### Versioni:

- A= Foro liscio passante.  
Contersunk bored through hole.  
Alesage traversant.
- B= Bussola ottone foro cieco filettato.  
Brass insert with tapped blind hole.  
Insert en laiton borgne taraudé.
- C= Perno in acciaio zincato filettato.  
Threaded zinc plated steel stud.  
Tige filetée en acier zingué.

### Note:

Si forniscono, per quantità adeguate, in colori diversi e con inserti a misura in acciaio, in ottone, in acciaio inox.

### Materiale:

Poliammide rinforzato nero, finitura opaca.  
Perni in acciaio inox AISI 303.  
Black reinforced nylon plastic.  
Pin in s/s AISI 303.  
Polyamide renforcé noir mat.  
Axe inox en AISI 303.

### Coppia massima di serraggio consigliata:

**Don't exceed the maximum NM screwing force:**

**Force maximale de serrage conseillée:**

Cod	modello	vite	Nm
6388010	<b>C40/A</b>	M4	2
6388020	<b>C48/A</b>	M5	5
6388030	<b>C65/A</b>	M6	10
6388040	<b>C98/A</b>	M10	30