

GUARDIAN

DYN 98

DYNALINE

Flexible Shaft Couplings

For The Mechanical Power Transmission Industry

MADE IN U.S.A

FIVE SIZES

- 00D
- 1D
- 2D
- 3D
- 4D



One-piece construction—No assembly, no wearing surfaces, easier installation.

End fittings crimped to rubber, providing balanced, quiet-running, vibration-free coupling.

Added length provides maximum angular and parallel misalignment. No need to align driver to driven components. Length to customer requirements—consult factory for high service factor ratings and effect of longer length.

Rubber sleeve body absorbs shock of start-stop applications and peak overloads. Excellent vibration-dampening characteristics.

Corrosion-resistant metal and neoprene rubber provide long life in difficult environments without maintenance, lubrication or adjustment.

Special designs or modifications engineered for the O.E.M. application.

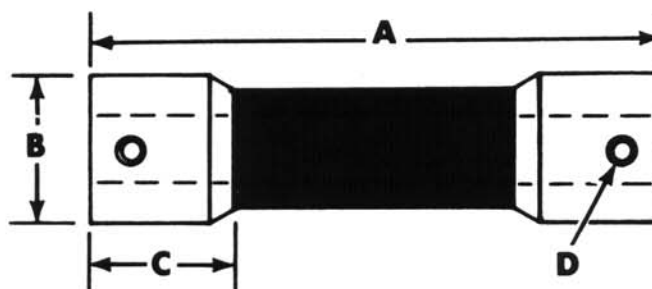
GUARDIAN Industries

3201 Ohio Street, P.O. Box 478, Michigan City, IN 46360
219/874-5248 Fax 219/879-6643

Guardian Flexible Couplings

TO ORDER:

Specify overall length (A), both bore sizes (see below) and keyways if required.



STANDARD KEYWAYS

Bore Range, in.	Keyseat, in.
3/8 to 1/2	1/8 x 1/16
5/8 to 7/8	3/16 x 3/32

METRIC BORES

Bore Range, mm	Keyseat, mm
6-7-8 mm	2 mm
9-10	3 mm
11-12	4 mm
13 thru 17	5 mm
18 thru 22	6 mm

HP & TORQUE RATINGS

SERIES NUMBER	HP@ 3450 RPM	HP@ 1750 RPM	NOMINAL TORQUE IN LBS.	STANDARD LENGTH	MOTOR FRAME SIZE	MAXIMUM BORE SIZE
00D	1/4	1/8	4.5	1"	Sub-42	5/16"
1D	1/2	1/3	12	2-1/4"	48	1/2"
2D	1	1/2	18	2-1/2"	48	1/2"
3D	1-1/2	3/4	27	3"	56	5/8"
4D	3	1-1/2	54	3"	56 w/Key	3/4"

DIMENSIONS

SIZE	"A" LENGTH MINIMUM	LENGTH MAXIMUM	B DIAMETER	C END FITTING	D SET SCREWS
00D	1" (25 mm)	2" (75 mm)	11/16" (18 mm)	3/8" (10 mm)	8-32
1D	1-5/8" (40 mm)	6" (150 mm)	1" (25 mm)	11/16" (18 mm)	1/4-20
2D	2-7/32" (56 mm)	10" (250 mm)	1-3/16" (30 mm)	1" (25 mm)	5/16-18
3D	2" (50 mm)	10" (250 mm)	1-9/32" (33 mm)	1" (25 mm)	5/16-18
4D	2-3/8" (60 mm)	10" (250 mm)	1-7/16" (37 mm)	1-1/14" (32 mm)	5/16-18

Length to customer's requirement. Metric set screws available.

END FITTING BORE SPECIFICATIONS

STD. FINISHED BORES	00D	1D	2D	3D	4D
Inches	3/16, 1/4, 5/16	1/4, 5/16, 3/8, 7/16, 1/2	1/4, 5/16, 3/8, 7/16, 1/2	5/16, 3/8, 7/16, 1/2, 9/16, 5/8	7/16, 1/2, 9/16, 5/8, 3/4
Metric	5-6-8 mm	8-10-12 mm	8-10-12 mm	10-12-14-16 mm	14-16-18-20 mm
Max. bore with keyway	N/A	3/8" (10 mm)	3/8" (10 mm)	1/2" (12 mm)	5/8" (16 mm)

GUARDIAN Industries

3201 Ohio Street, P.O. Box 478, Michigan City, IN 46360
219/874-5248 Fax 219/879-6643

Copyright© Guardian Industries 1993