

# Double-Loop coupling

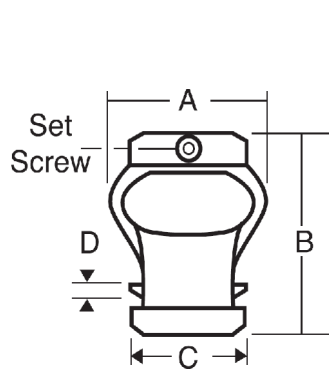
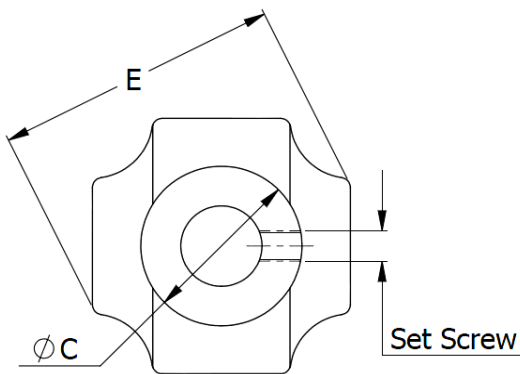
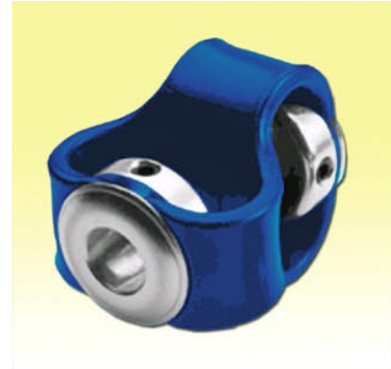
Double-Loop miniature coupling is made of double-loop polyurethane assembled to stainless steel hubs to resist corrosion. The coupling design for high precision applications which operational requirement include zero backlash, low inertia, high flexibility but torsionally stiff.

**Hubs: AISI 304 Stainless Steel.**

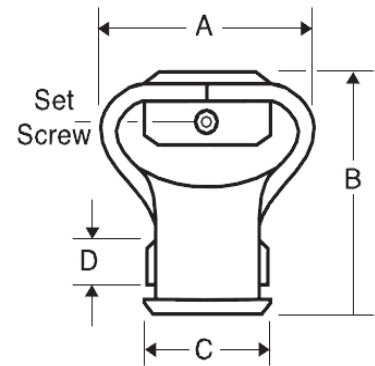
**Double-loop: High-Performance polyurethane Elastomer.**

**Maximum Speed: 3,600 RPM.**

**Temperature Range: -40 to 120 °C**



Series 801



Series 802, 803, 804

**Dimensions: Millimeters.**

Series	Bore Sizes		Dimensions					Set Screw	Rated Torque (Nm.)	Max.Misalignments		
	(mm.)	(Inch)	A	B	C	D	E			Angular (Degree)	Parallel (mm.)	Axial (mm.)
801	3, 4, 5	3/16", 1/4"	22.25	28.60	17.50	1.60	25.4	M3.5	0.34	10	2.38	4.5
	6, 8	5/16", 3/8"	±1.6	±1.6	±0.4	±0.75	±1.6					
802	4, 6, 8,	1/4", 5/16"	42.87	50.80	25.40	9.50	47.5	M5	1.36	15	3.00	7.5
	10, 11, 12	3/8", 7/16", 1/2"	±1.6	±1.6	±0.4	±0.75	±1.6					
803	6, 8, 10,	3/8", 7/16"	46.00	57.15	31.75	11.00	53.3	M6	3.16	15	4.75	8.5
	12, 14, 15, 16	1/2", 9/16", 5/8"	±1.6	±1.6	±0.4	±0.75	±1.6					
804	6, 8, 10,	3/8", 7/16"	50.80	61.90	31.75	9.50	54.2	M6	4.52	15	3.00	11.0
	12, 14, 15, 16	1/2", 9/16", 5/8"	±2.3	±1.6	±0.4	±0.75	±1.6					

**The Selection:**

**Find Rated torque by:**

$$\text{Rated Torque (Nm.)} = \frac{kW \cdot 9550}{\text{RPM.}}$$

**Misalignments:**

Maximum compensation values are mutually inclusive.